

PRESENZA
ITALIA

**STAINLESS STEEL
UTILITY SINK WITH FAUCET
AND STORAGE CABINET**



**INSTALLATION GUIDE
AND USER MANUAL**

Model No. QL032

Table of Contents

Table of Contents	2	Installing the Faucet	7
Safety Information	2	Installing the Strainer	8
Warranty		Mounting the Utility Sink	9
One Year Limited Warranty.....	3	Placement	10
Warranty Claim Procedure.....	3	Supply Line	10
Pre-Installation		Maintenance	
Tools/Materials Required	4	Cartridge Replacement	10
Parts Required	4	Care and Cleaning	
Package Contents	5	Utility Sink	11
Installation		Cabinet.....	11
Installing the Leveling Legs	6	Service Parts	12
Installing the Handles	7		

Safety Information

READ AND SAVE THESE INSTRUCTIONS



DANGER: Always wear safety goggles and gloves in order to avoid personal injury.

1. Inspect your unit before proceeding. Once you unpack your unit, check for chips, scratches, cracks, dents or scuff marks. If any damage is noticed, do not install.
2. Use this unit only in the manner intended by the manufacturer. If you have any questions, contact the manufacturer.
3. Installation work and plumbing must be done by qualified person(s) in accordance with all applicable codes and standards.
4. Protect the entire surface during installation.
5. All holes drilled into the unit must be done from the finished surface side with extreme care and caulked very carefully to form a watertight barrier.

Warranty

ONE YEAR LIMITED WARRANTY

A thorough inspection must be made before installation and any damage must be promptly reported. We will not be liable for failures or damage that could have been discovered or avoided by proper inspection and testing prior to installation.

Conglom Kitchen & Bath warrants this product to be free from defects in materials or workmanship for one (1) year from the date of purchase. Proof of purchase (original sales receipt) from the original consumer purchaser must be made available to Conglom Kitchen & Bath for all warranty claims.

This warranty is non-transferable and shall be voided if the unit is removed from its initial installation or if it is not installed following the manufacturer's instructions. It does not apply in the event of product damage due to the use of other than genuine Conglom Kitchen & Bath replacement parts, (Replacement parts may be obtained by e-mail at cs@conglomkb.com or by calling 1-877-333-0098 between 8:30 am - 5:00 pm EST) installation error, abuse, misuse or improper care and maintenance (whether performed by a plumber, contractor, service provider or member of the purchaser's household). The warranty excludes damage due to aggressive air or water conditions, harsh or abrasive cleaners and/or materials.

Under no circumstance shall we be held liable for personal injury or property damage resulting from improper installation or use of this product. We will not be held liable for inconvenience caused by loss of use of this product, costs incurred for labour or materials, removal and installation of replacement units, or any other incidental or consequential damages. Costs relating to obtaining access for repair or replacement are the responsibility of the user.

Our obligation shall be limited to the repair or replacement of a unit (at our discretion) that may prove, by our sole examination, to be defective under normal use and service during the warranty period.

Any failure of this product that is not traceable to a defect in material or workmanship is not covered by this warranty. These non-warrantable items include, but are not limited to:

- Improper installation not in accordance with manufacturer's instructions.
- Dents and/or scratches incurred during shipping, handling, or installation.
- Change in colour or finish due to chemical usage.
- Damage caused by failure to follow care and cleaning guidelines, including damage caused by the use of abrasive cleaners.
- Alterations made to the unit by the purchaser or installer.
- Damage caused by accidental impact, fire, flood, freezing, and normal wear.
- Bends and warping caused by forced connections, over-tightened fittings, and inadequate support during installation.
- This warranty does not extend to commercial and institutional installation or use.

WARRANTY CLAIM PROCEDURE

If a claimable defect occurs or replacement parts are needed, please contact our customer service team at cs@conglomkb.com or 1-877-333-0098 (Service available in English and French, Monday - Friday from 8:30am - 5pm EST).

Before you make your call, please ensure that you have:

- Model number or description.
- Proof of sale.
- Details regarding the defect and/or part number.
- Name(s) and address(es) of the owner and/or installer.

Pre-Installation

TOOLS/MATERIALS REQUIRED (NOT SUPPLIED)



Adjustable
wrench



Needle nose
pliers



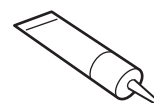
Phillips
screwdriver



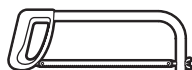
Utility knife



Pipe wrench



Sealant



Hacksaw



Carpenter's level



Hex key

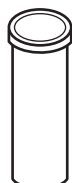


Safety gloves



Safety goggles

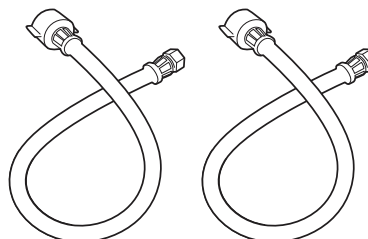
PARTS REQUIRED (NOT SUPPLIED)



Tail Pipe



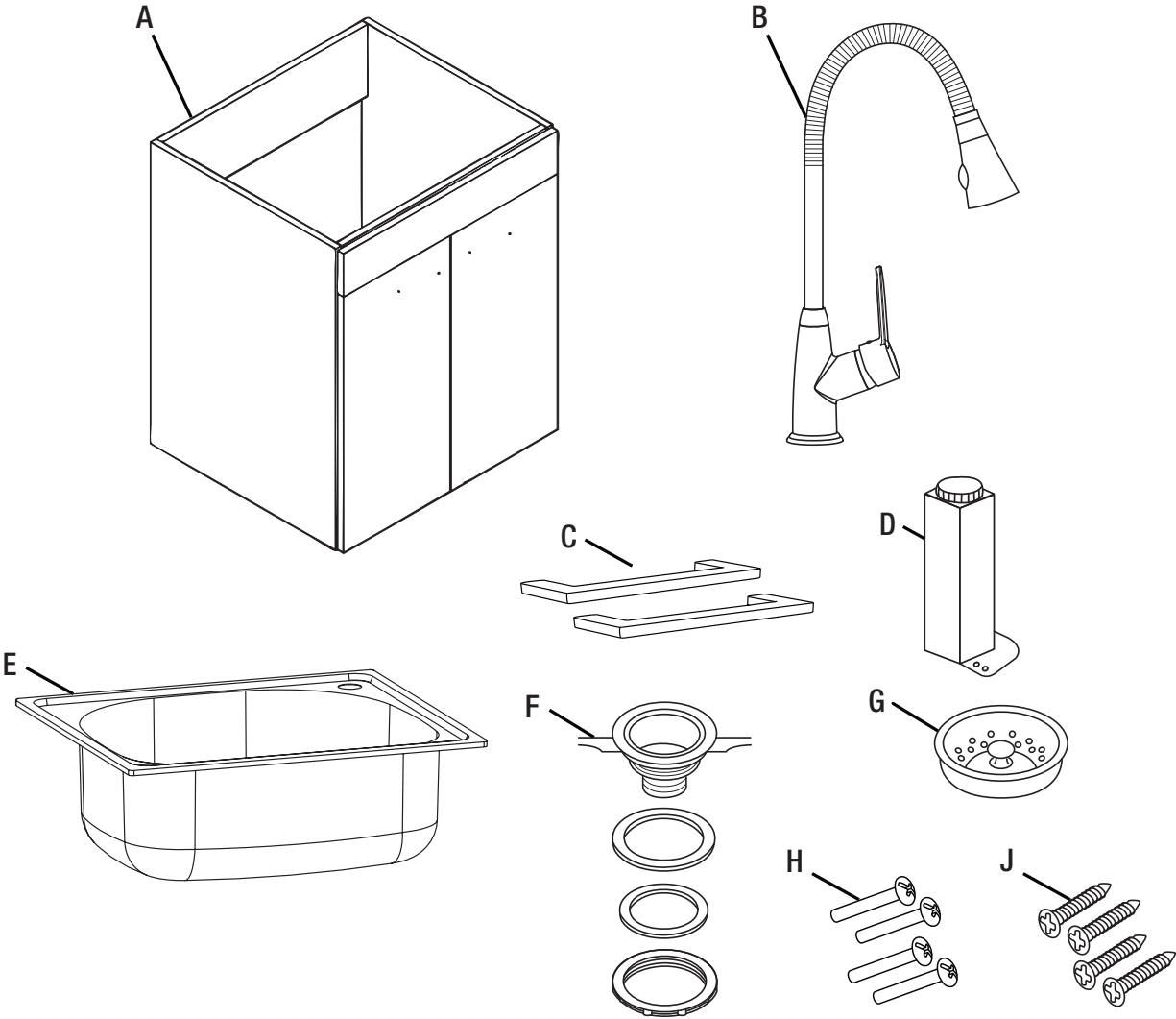
P-Trap



Supply line

Pre-Installation (continued)

PACKAGE CONTENTS



Part	Description	Quantity
A	Cabinet	1
B	Faucet	1
C	Door Handles	2
D	Leveling Legs	4
E	Utility Sink	1
F	Strainer Assembly	1
G	Strainer Basket	1
H	Handle Screws	4
J	Leveling Leg Screws	16

Installation

INSTALLING THE LEVELING LEGS

Carefully check the utility sink for damage and/or missing parts prior to installation. If there is any damage or if you are missing parts, do not proceed with the installation. Report damage and/or missing parts immediately to the manufacturer. Do not dispose of packaging before you are satisfied with your new utility sink.



WARNING: Always wear safety goggles and gloves during installation.



CAUTION: Do not place side load on the leveling legs when righting the cabinet as they may break.

- Remove the utility sink (E) and place it on a soft, protective surface (Fig. 1).
- Turn the cabinet (A) upside down onto a protective surface.
- Gently put each leveling leg (D) into its proper location. Using the four screws provided (J) per leveling leg, attach the leveling legs (D) to the bottom of the cabinet (A).
- Gently right the cabinet (A).
- Using a carpenter's level, turn the base of each leveling leg (D) until the cabinet (A) is level.

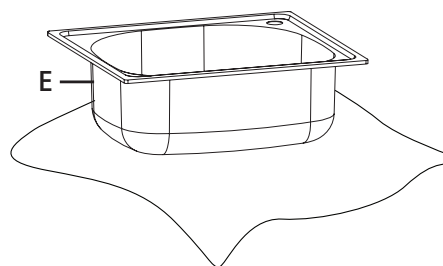
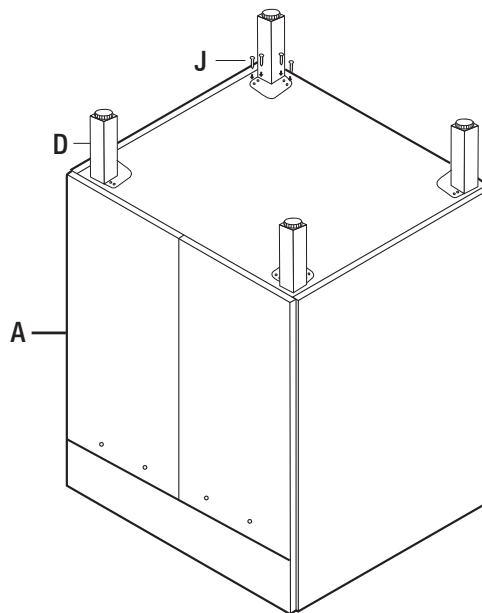
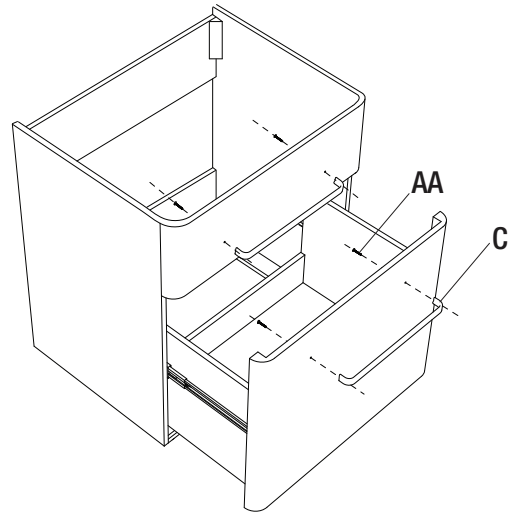


Fig. 1

Installation (continued)

INSTALLING THE HANDLES

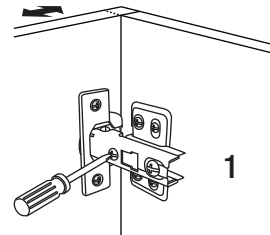
- Insert two handle screws (H) into the pre-drilled holes on the door.
- Attach a door handle (C) and tighten the door handle screws (H).
- Repeat on the other door.



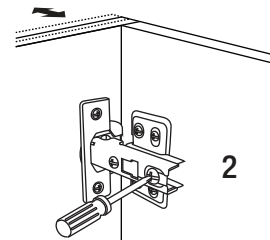
ADJUSTING THE DOOR POSITION

If the doors need to be repositioned, the hinges can be adjusted to ensure a precise fit with a cabinet.

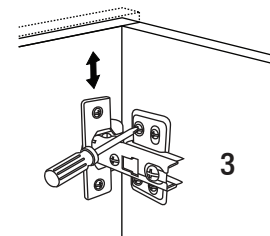
1. The lateral adjustment screw adjusts the door left or right.



2. The horizontal adjustment screw adjusts the door forward or backward.



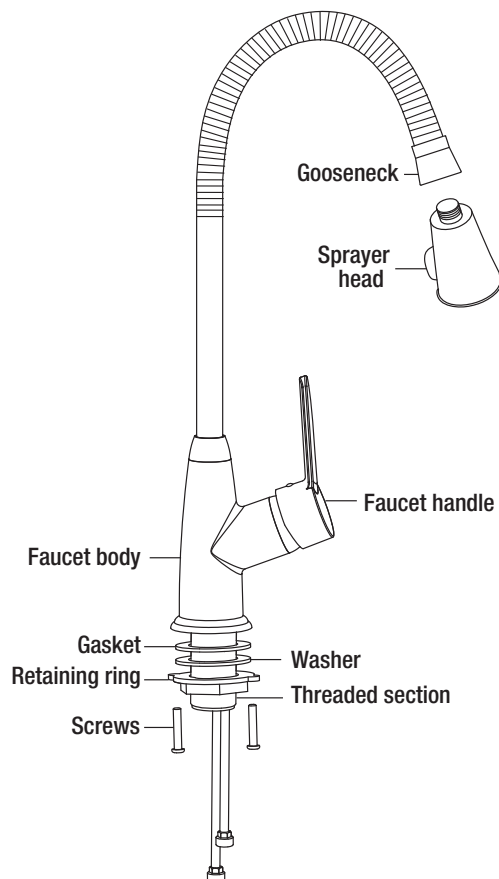
3. The vertical adjustment screw adjusts the door up or down.



Installation (continued)

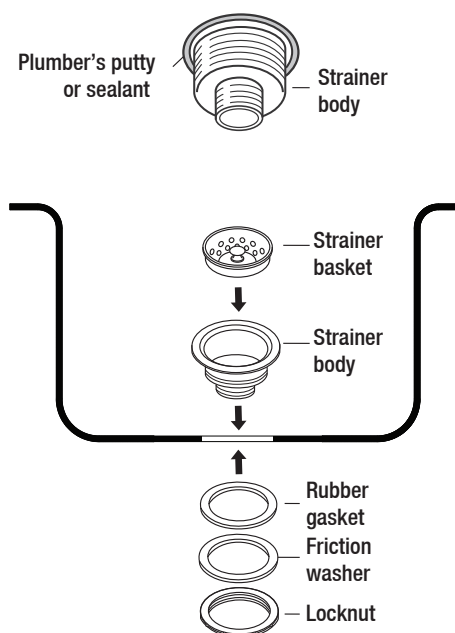
INSTALLING THE FAUCET

1. Carefully take out all the parts of the faucet assembly (B). The faucet is pre-assembled, except for the sprayer head.
2. Take the washer, gasket and retaining ring off of the faucet body.
3. Place the faucet body carefully through the hole in the sink (E). A second person may be required to hold the body in place until the faucet installation is complete.
4. From underneath, slide the washer, gasket and retaining ring over the end of the copper pipe and up to the exposed threaded section of the faucet. Tighten the retaining ring by hand until it is snug. Using a wrench or pliers, tighten the assembly.
5. Gently tighten the two screws on the retaining ring. Do not over tighten.
6. Screw the sprayer head onto the gooseneck.
7. Connect the water supply lines (not supplied) to the faucet.



INSTALLING THE STRAINER

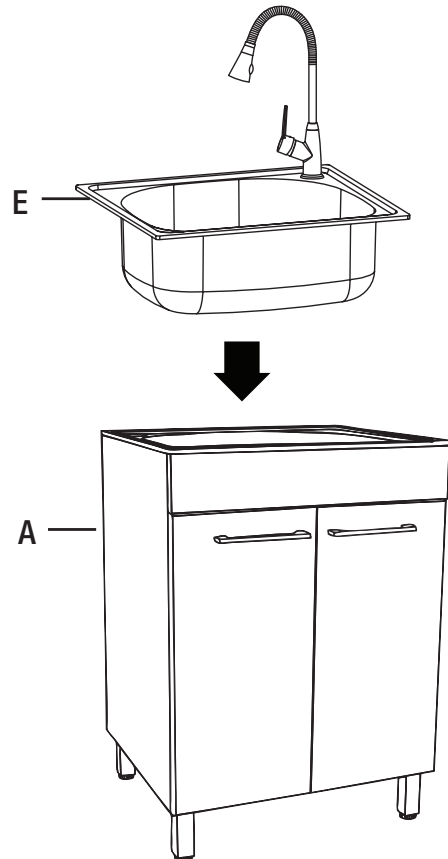
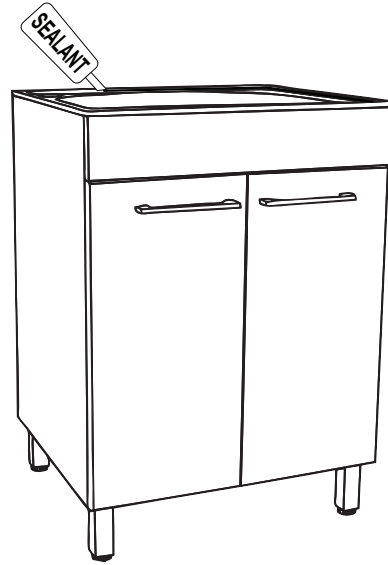
1. Apply a ring of plumber's putty to the underside of the strainer flange.
2. Insert the strainer body into the sink.
3. Assemble the rubber gasket, friction washer and locknut onto the strainer body from underneath the utility sink. Hand tighten the locknut.
4. Connect the plastic flange and tail pipe (not supplied), then thread the connecting nut through the tail pipe and plastic flange up to the lower threaded part of the strainer body. Tighten the connecting nut by hand.



Installation (continued)

MOUNTING THE UTILITY SINK

1. Carefully place a bead of sealant all around the top of the cabinet (A).
2. Ease the utility sink (E) into the cabinet (A). Ensure that it is placed evenly and is centered on the cabinet. Wipe off any excess sealant. Use masking tape to hold the basin in place until the sealant dries.



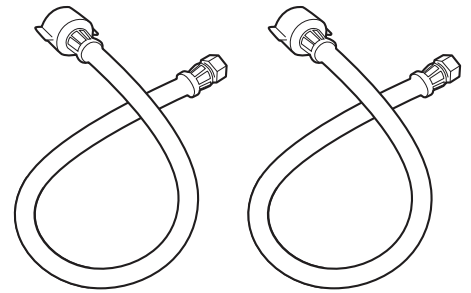
Installation (continued)

PLACEMENT

Move the assembled unit to its final location. If required, level the unit by adjusting the four leveling legs. Ensure that no rocking is exhibited.

SUPPLY LINE

The supply lines, which connect the faucet to the household water system, are not supplied with this unit. They need to be purchased separately. Follow the supply line manufacturer's instructions for proper installation.

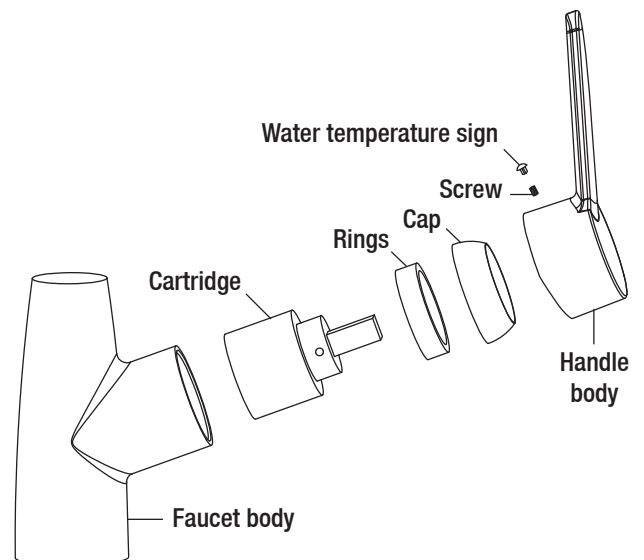


Maintenance

CARTRIDGE REPLACEMENT

If in the future the ceramic cartridge needs to be replaced:

1. Turn off the water supply to the faucet (B).
2. Take off the plastic water temperature sign by hand, then use the Hex key to take out the screw and pull out the handle body. The top lever of the cartridge will be exposed.
3. Unscrew the cap and rings, making sure not to damage the threads.
4. Pull the cartridge out of the faucet body and replace it with a new 35 mm ceramic cartridge.
5. Replace the rings, then the cap.
6. Place the handle body on the cartridge. Lock the screw back onto the handle body and tighten it with the Hex key. Do not over tighten.
7. Put the plastic water temperature sign back into the hole, make sure that red is on the left and blue is on the right.
8. Slowly open the water feed to the faucet to test.



Care and Cleaning

UTILITY SINK

Your sink is manufactured with the highest grade stainless steel and will provide you many years of enjoyment with the proper care.

Do
<ul style="list-style-type: none">- After use, always rinse your sink with tap water to dilute and remove deposits.- Towel dry after use whenever possible to prevent water spots. Should water spots occur, clean with a mild solution of vinegar and water followed by a thorough rinse.- Use liquid soap, a general household cleaner, or a weak solution of vinegar and water for regular cleaning.- Only use plastic scouring pads recommended for use in stainless steel sinks, and only use them in the bowl of the sink. Scrub in the direction of the satin finish lines.

Do not
<ul style="list-style-type: none">- Do not allow any food, detergent, soap or grease to dry or sit for extended periods of time on the surface of the sink.- Never use abrasive cleaning products, as they will dull and scratch the finish.- Do not use scouring pads on the deck, as they will dull the mirror finish.- Never use steel wool pads, as they will leave iron particles on the sink, which will cause corrosion.- Never leave steel or cast iron pans in your sink for extended periods of time, as this can cause corrosion.

CABINET

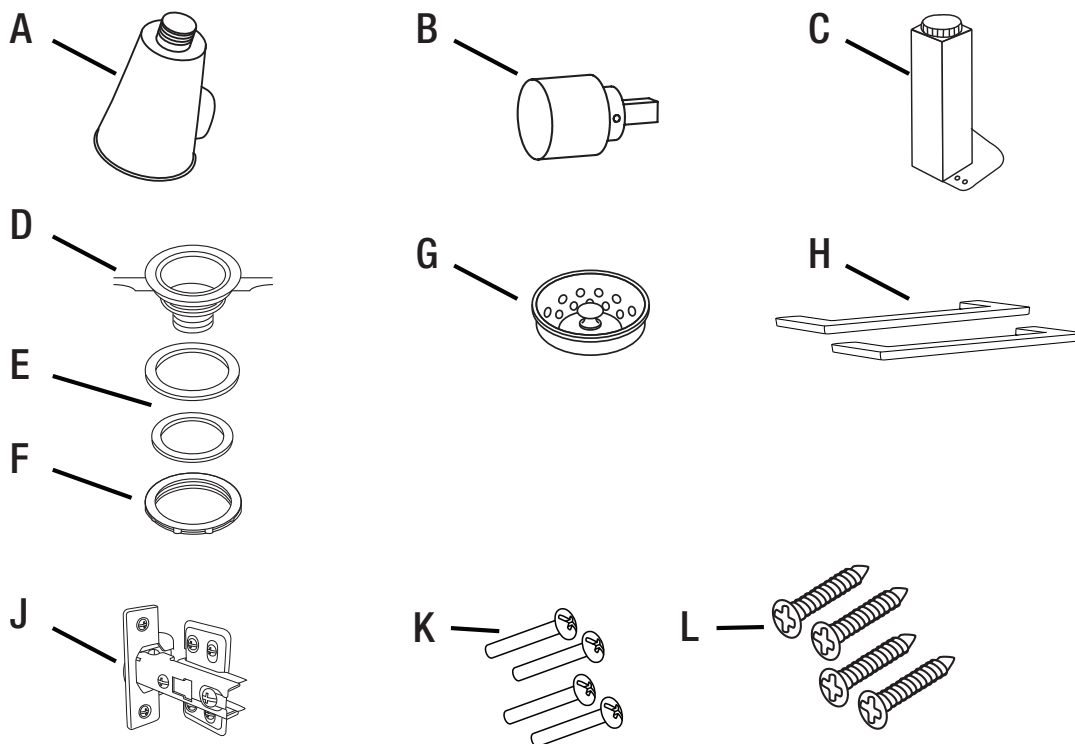
To maintain the surface of your cabinet, follow these tips.

Do
<ul style="list-style-type: none">- Remove dust and dry dirt with a soft, damp cloth.- Clean grease, oil, paint and ink stains with isopropyl (rubbing alcohol). Immediately rinse with water after stain removal.

Do not
<ul style="list-style-type: none">- Do not allow your cabinet surface to come into contact with products such as acetone (nail polish remover), nail polish, dry cleaning solution, lacquer thinners, gasoline, pine oil, etc.- Use caution when using sharp instruments that may fall and scratch the surface.

Service Parts

If you are missing parts or if you require replacement parts, please contact our customer service team at cs@conglomkb.com or 1-877-333-0098 (Service available in English and French, Monday - Friday from 8:30am - 5pm EST). Identify the required part(s) and have the part number(s) ready.



Part	Description	Code	Quantity
A	Sprayer Head	QHL186	1
B	Ceramic Cartridge	QHS121	1
C	Leveling Legs	QHL139	4
D	Strainer Body	QHS102	1
E	Rubber Gasket & Friction Washer	QHS103	1
F	Locknut	QHS104	1
G	Strainer Basket	QHS101	1
H	Handles	QHL144	2
J	Hinges	QHL102	4
K	Handle Screws	QHL104	4
L	Leveling Leg Screws	QHL106	16

Imported by:



St-Laurent, Québec, H4S 2C3

1-877-333-0098 | cs@conglomkb.com

(Service available in English and French, Monday - Friday from 8:30am - 5pm EST)

www.conglomkb.com

Made in China

