



Westinghouse

1/2 HP

HIGH TORQUE GARBAGE DISPOSER

NOTE: This product may require approval of the relevant regulators and/or the sewerage system operator. Waste disposal must be installed according to AS/NZS 3500.2 requirements. This waste disposer is intended exclusively for home use.



220-240V AC, 50/60 Hz, 375 W

OWNER'S MANUAL

QKGA016

Table of Contents

Table of Contents	2	Installation of the Mounting Assembly	6
Safety Information	2	Attaching Discharge Elbow	7
Warranty		Removing Knockout Plug	7
Five (5) Year Limited Warranty	3	Connecting Disposer to Mounting Assembly	8
Warranty Claim Procedure	3	Dishwasher Connection	9
Pre-Installation		Electrical Connection & Grounding	9
Tools/Materials Required	4	Operation	10
Package Contents	4	Care and Maintenance	10
Installation		Troubleshooting	11
Removal of Old Unit	5	Service Parts	12

Safety Information

READ ALL INSTRUCTIONS BEFORE USING THE APPLIANCE

IMPORTANT SAFETY INSTRUCTIONS

INSTRUCTIONS PERTAINING TO A RISK OF FIRE, ELECTRIC SHOCK, OR INJURY TO PERSONS. WARNING - WHEN USING ELECTRICAL APPLIANCES, BASIC PRECAUTIONS SHOULD ALWAYS BE FOLLOWED, INCLUDING THE FOLLOWING:


NOTE:


This food waste disposer has been designed to operate on 220-240V, 50/60 Hz exclusively. Using any other voltage or frequency adversely affects its performance.


1. Inspect your unit before proceeding. Once you unpack your unit, check for chips, scratches, cracks, dents or scuff marks. If any damage is noticed, do not install. Please return to the place of purchase.
2. Use this unit only in the manner intended by the manufacturer. If you have any questions, contact the manufacturer.
3. Installation work and plumbing must be done by qualified person(s) in accordance with all applicable codes and standards.
4. When attempting to loosen an obstruction in a waste disposer, use a long wooden object such as a wooden spoon or the wooden handle of a broom or a mop.
5. When attempting to remove objects from a waste disposer, use long-handled tongs or pliers. If the disposer is magnetically actuated, non-magnetic tools should be used.
6. When not operating a disposer, leave the drain cover (stopper) in place to reduce the risk of objects falling into the disposer.


SAVE THESE INSTRUCTIONS


 **WARNING:** Do not put fingers or hands into a waste disposer.

 **WARNING:** Turn the power switch to the off position before attempting to unblock or remove an object from the disposer.

 **WARNING:** Do not operate disposer unless splash guard is in place.

 **WARNING:** To reduce the risk of injury by materials that may be expelled by a waste disposer, do not put the following into a disposer: clam or oyster shells; caustic drain cleaners or similar products; glass, china or plastic; large whole bones; metal, such as bottle caps, tin cans, aluminum foil or utensils; hot grease or other hot liquids; whole cornhusks.

 **WARNING:** To reduce the risk of injury, close supervision is necessary when the appliance is used near children.

 **WARNING:** This food waste disposer has been designed to operate on 220-240 VAC, 50/60 Hz electrical circuits.

Warranty

FIVE (5) YEAR LIMITED WARRANTY

A thorough inspection must be made before installation and any damage must be promptly reported. We will not be liable for failures or damage that could have been discovered or avoided by proper inspection and testing prior to installation.

ACM Pty Limited warrants this product to be free from defects in materials or workmanship for five (5) years from the date of purchase. Proof of purchase (original sales receipt) from the original consumer purchaser must be made available to ACM Pty Limited for all warranty claims.

This warranty is non-transferable and shall be voided if the unit is removed from its initial installation or if it is not installed following the manufacturer's instructions. It does not apply in the event of product damage due to the use of other than genuine ACM Pty Limited replacement parts, (Replacement parts may be obtained by calling 0800 744 794 between 8:00 am - 4:30 pm AEDT) installation error, abuse, misuse or improper care and maintenance (whether performed by a plumber, contractor, service provider or member of the purchaser's household). The warranty excludes damage due to aggressive air or water conditions, harsh or abrasive cleaners and/or materials.

Under no circumstance shall we be held liable for personal injury or property damage resulting from improper installation or use of this product. We will not be held liable for inconvenience caused by loss of use of this product, costs incurred for labour or materials, removal and installation of replacement units, or any other incidental or consequential damages. Costs relating to obtaining access for repair or replacement are the responsibility of the user.

Our obligation shall be limited to the repair or replacement of a unit (at our discretion) that may prove, by our sole examination, to be defective under normal use and service during the warranty period.

Any failure of this product that is not traceable to a defect in material or workmanship is not covered by this warranty. These non-warrantable items include, but are not limited to:

- Improper installation not in accordance with manufacturer's instructions.
- Dents and/or scratches incurred during shipping, handling, or installation.
- Damage caused by failure to follow care and cleaning guidelines.
- Alterations made to the unit by the purchaser or installer.
- Damage caused by accidental impact, fire, flood, freezing, and normal wear.
- Bends and warping caused by forced connections, over-tightened fittings, and inadequate support during installation.

This warranty does not extend to commercial and institutional installation or use.

WARRANTY CLAIM PROCEDURE

If a claimable defect occurs or replacement parts are needed, please contact our customer service team at 0800 744 794 (Service available Monday - Friday from 8:00 am - 4:30 pm AEDT).

Before you make your call, please ensure that you have:

- Model number or description.
- Proof of sale.
- Details regarding the defect and/or part number.
- Name(s) and address(es) of the owner and/or installer.

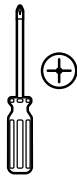
Pre-Installation

ENGLISH

TOOLS/MATERIALS REQUIRED (NOT SUPPLIED)



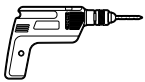
Pipe wrench



Phillips screwdriver



Flat screwdriver

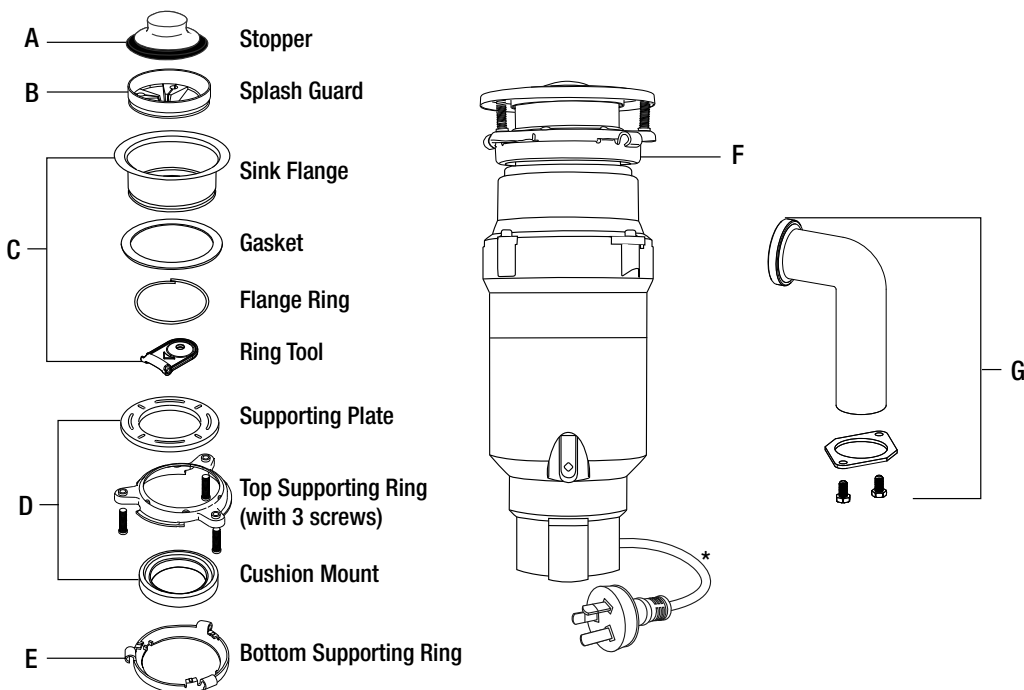


Electric drill with
1-1/4" (32mm) hole
saw




Plumber's putty

PACKAGE CONTENTS



Part	Description	Quantity
A	Stopper	1
B	Removable splash guard	1
C	Includes:	
	Sink flange	1
	Rubber sink flange gasket	1
	Flange ring	1
	Ring tool	1
D	Includes:	
	Supporting plate	1
	Top supporting ring (with 3 screws)	1
	Cushion mount	1

Part	Description	Quantity
E	Bottom supporting ring	1
F	Disposer body	1
G	Includes:	
	Elbow gasket (Preinstalled)	1
	Discharge elbow	1
	Elbow Flange	1
	Screw	2

*  **NOTE:** This waste disposer is intended to be plugged into a grounded receptacle that is controlled by a dedicated switch (usually wall mounted).

Installation

REMOVAL OF OLD UNIT

General instructions - your model may vary.

NOTE:

Before starting this step, turn off the electrical power at the circuit breaker or fuse box. Unplug the disposer.

- Disconnect dishwasher if connected to the disposer.
- Disconnect drain line where it attaches to the disposer discharge elbow (see Fig. 1).
- Remove the disposer from the sink flange by turning the mounting ring clockwise. If you are unable to turn the mounting ring, tap on one of the extensions from the ring with a hammer. Some mounting systems have tubular extensions, inserting a screwdriver into one tube will provide additional leverage for turning the mounting ring (see Fig. 2).

Some disposers may require the removal or loosening of nuts from the mounting screws (see Fig. 3). Some disposers may require the removal of a clamp.

NOTE:

If your disposer has the same flange as the new disposer and you would like to keep your old flange, you may skip the following steps and skip to page 7. If you would like to replace your existing flange or if the flange is different, please continue with the following steps.

- To remove the remaining mounting system from the sink, loosen the mounting screws and push the mounting ring up to reveal the flange ring. Use a screwdriver to pop off the ring (see Fig. 4). Remove the loose components from the sink flange. Some mountings will require the unscrewing of a large ring holding the sink flange in place. Pull the sink flange up through the sink and clean off the old putty from the sink.

NOTE:

This is a good time to clean out the trap and drain lines by running a drain auger or plumber's snake before installing your new disposer.



CAUTION: Risk of electric shock. Turn off electric power at fuse box or circuit breaker before removing old unit.



CAUTION: Be sure to support the disposer when removing the mounting ring or it may fall.

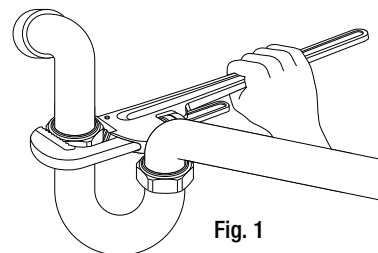


Fig. 1

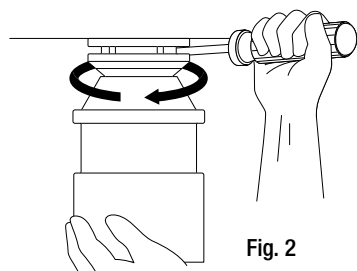


Fig. 2

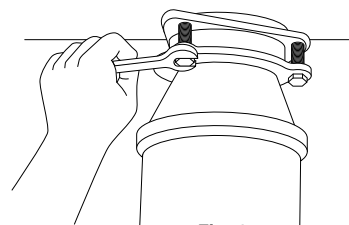


Fig. 3

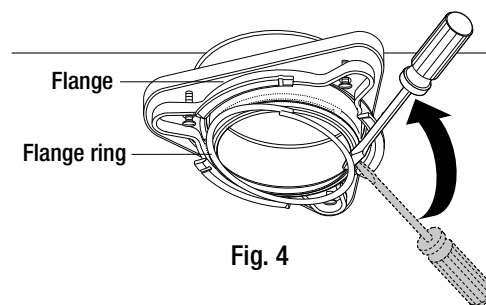


Fig. 4

Installation (continued)

INSTALLATION OF MOUNTING ASSEMBLY

NOTE:

Pay close attention how the parts come assembled, as they have been correctly assembled by the factory (see Fig. 5).

This food waste disposer has been designed to operate on 220-240V AC, 50/60 Hz electrical circuit.

- Disassemble the mounting assembly from the disposer by turning the bottom supporting ring clockwise.
- Loosen the 3 screws all the way or remove them from the top supporting ring (Fig. 5a), then use a screw driver to remove the flange ring (Fig. 5b).
- The sink flange may be installed with or without use of plumber's putty (see Fig 7 and 7a).

If you use putty, (see Fig. 7a) form a ring around the underside of the sink flange (see Fig. 6). Insert the flange into the sink opening, press down hard to squeeze out the excess putty. Trim off excess putty from the top and bottom of the sink opening (see Fig. 7b). Do not rotate the flange once it is seated.

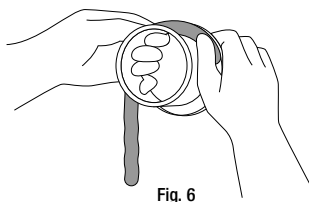
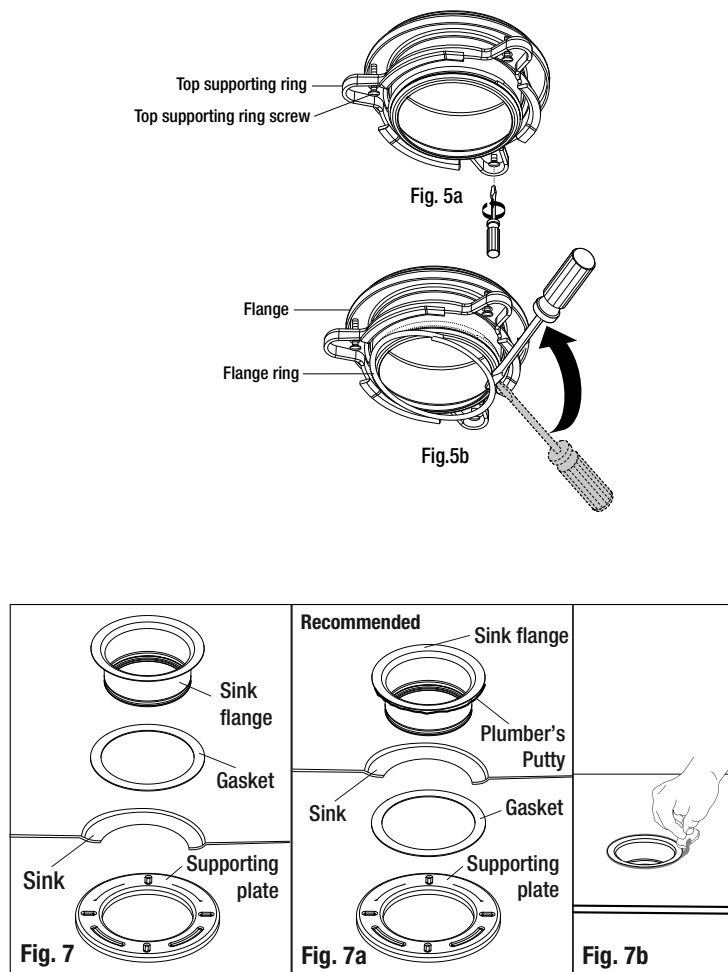
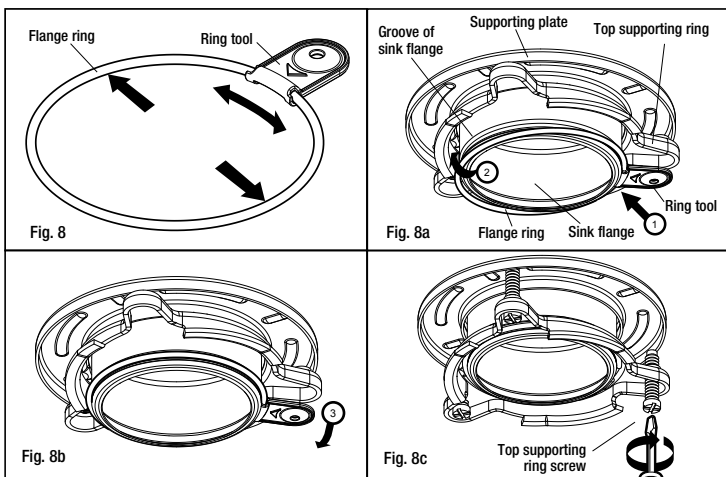


Fig. 6



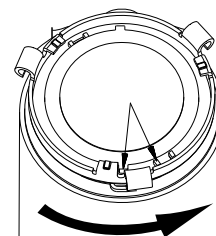
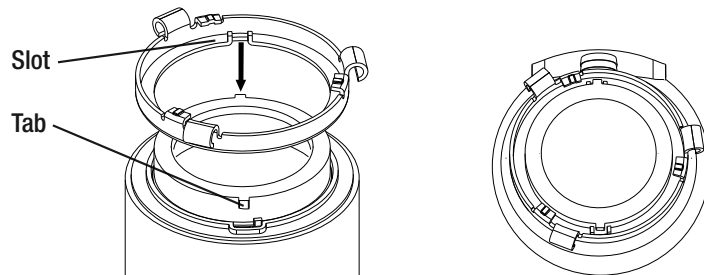
- Use duct tape or place a heavy object on top of the sink flange to keep it in place.
- Stretch the flange ring and insert the ends securely into the ring tool. Keep your fingers away from the ends of the flange ring at all times (see Fig. 8).
- Insert the supporting plate and the top supporting ring and hold them in place. Place the ring tool in the groove of the sink flange with the arrow side facing towards the bottom. Using your thumb, push the opposite end of the flange ring until it snaps into the groove of the sink flange (see Fig. 8a).
- Release the ring tool by rotating it downwards until it snaps away from the flange ring (see Fig. 8b).
- Tighten the 3 top supporting ring screws sequentially until the flange is very securely fastened to the sink (see Fig. 8c)



Installation (continued)

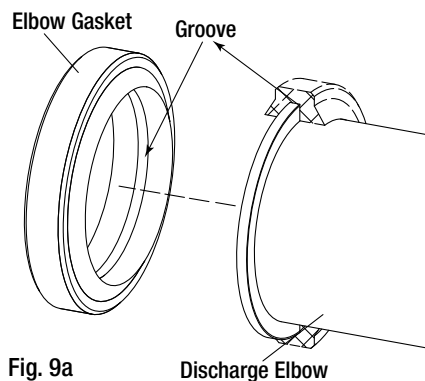
If at any time the bottom supporting ring becomes disengaged from the body of the waste disposer, then:

1. Align the slot in the bottom supporting ring with tab on the waste disposer body.
2. Lower the bottom supporting ring and make the slot fit in the tab.
3. Turn the bottom supporting ring counter clockwise to secure it in place.



ATTACHING DISCHARGE ELBOW

- Make sure the elbow gasket is attached to the discharge elbow correctly (see Fig. 9a).
- Connect the discharge elbow to the disposer (see Fig. 9).



REMOVING KNOCKOUT PLUG (SKIP THIS STEP IF YOU DO NOT HAVE A DISHWASHER)

NOTE:

Not recommended for use in Australia and New Zealand.

The dishwasher connector of this waste disposer is not recommended for use in Australia and New Zealand. It is recommended to connect the dishwasher using IPLEX / CAROMA dishwasher connectors for optimal performance in these regions instead.

Once removed, the knockout plug cannot be replaced.

- Using a blunt instrument (steel punch or wooden dowel), knock out the entire plug (see Fig. 10). Do not use a screwdriver or sharp instrument. When the knockout plug falls into the disposer, you may remove it, or grind it up when the disposer is being used. This will not damage the disposer in any way, but may take some time to grind.

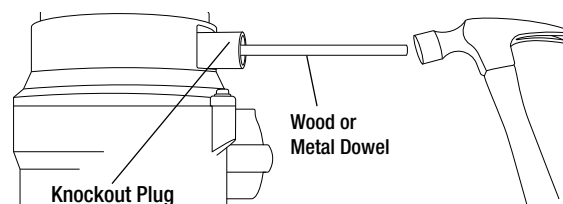
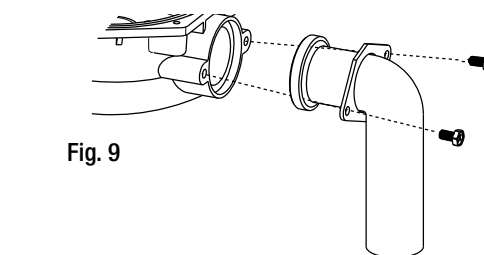


Fig. 10

Installation (continued)

CONNECTING THE DISPOSER TO THE MOUNTING ASSEMBLY

ENGLISH

- Adjust the disposer position to make the elbow line up with the trap (see Fig. 11).

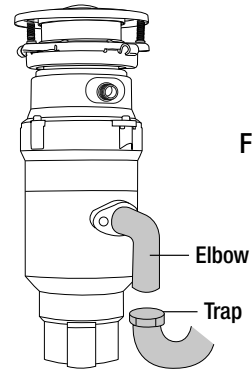


Fig. 11

- The disposer must be installed so that the reset button is readily accessible (see Fig. 12).

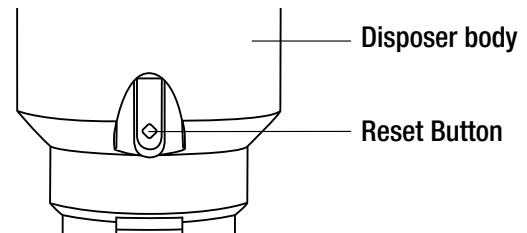


Fig. 12

- Make sure the cushion mount is properly in place. Line up the disposer under the mounting assembly. Lift and guide the disposer so that all three tabs of the bottom supporting ring engage the steps of the top supporting ring. Turn the bottom supporting ring counter-clockwise until it is fully engaged and the tool mount comes in contact with the top supporting ring. Insert a screw driver into the tool mount for added leverage, if needed (see Fig 13a).

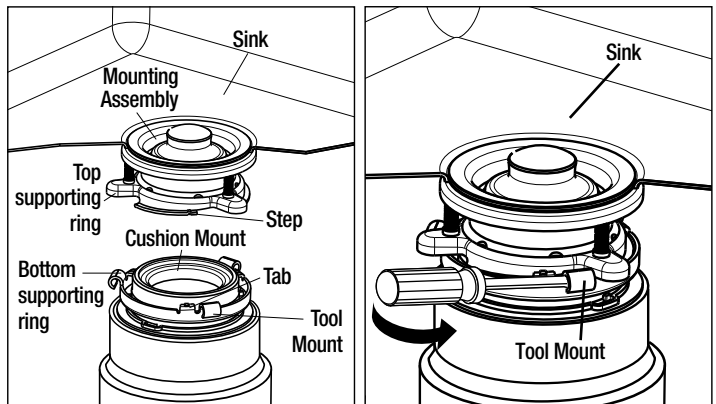


Fig.13

Fig.13a

If you are unable to fully engage the bottom supporting ring, release and lower the waste disposer (see Fig 13b).

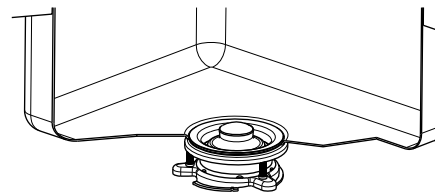
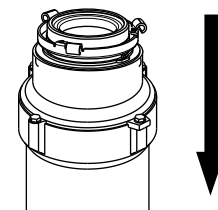


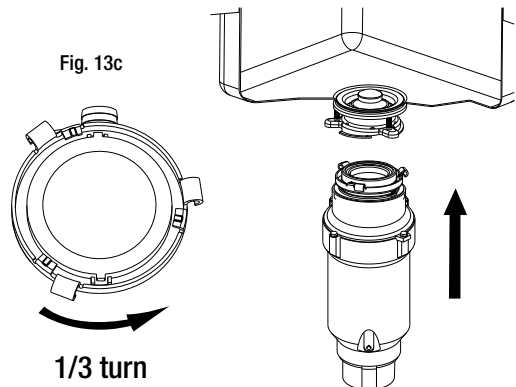
Fig. 13b



Installation (continued)

Turn the bottom supporting ring 1/3 of a turn counter-clockwise and repeat the mounting procedure described above (see Fig 13c).

- Connect the bottom of the elbow to the trap by tightening the slip nut (Fig. 14).
- Run water and check all connections for leaks.



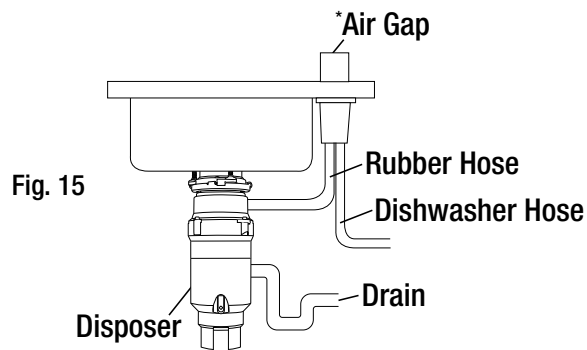
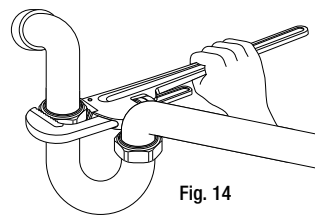
DISHWASHER CONNECTION

NOTE:

Not recommended for use in Australia and New Zealand. See "Removing Knockout Plug" section for more details.

- Ensure the plug has been properly removed. See "Removing Knockout Plug" section for more details.
- Connect the dishwasher hose (see Fig. 15) using a hose clamp. Make sure all plumbing connections are tight. Run water and check for leaks.

*Air Gap may not be required for all installations, verify your local plumbing codes.



ELECTRICAL CONNECTION & GROUNDING

- Connect the disposer to the appropriate household current only.
- This appliance must be grounded. In the event of a malfunction or breakdown, grounding provides a path of least resistance for electric current to reduce the risk of electric shock. This appliance is equipped with a cord having an equipment-grounding conductor and a grounding plug. The plug, supplied with this unit, must be connected to an appropriate outlet that is properly installed, switched and grounded in accordance with all local codes and ordinances. If the supply cord is damaged it must be replaced by the manufacturer or a qualified person in order to avoid a hazard.



WARNING: Improper connection of the equipment-grounding conductor can result in a risk of electric shock. Check with a qualified electrician if you are not sure. Do not modify the plug provided with the appliance if it does not fit the outlet. Have a proper outlet installed by a qualified electrician.



NOTE: This waste disposer is intended to be plugged into a grounded receptacle that is controlled by a dedicated switch (usually wall mounted).

Operation

TESTING AND OPERATION

- Remove sink stopper. Turn on a medium flow of cold water.
- Turn switch to ON position; your motor is turning at full speed and ready to use.
- Slowly insert food waste into disposer (table scraps, peelings, rinds, seeds, pits, small bones and coffee grounds). To speed up food waste disposal, cut or break up large bones, rinds and cobs. Large bones and fibrous waste require considerable grinding time and are more easily thrown away with other trash. Do not be alarmed that the disposer slows down while grinding. The disposer is actually increasing torque (grinding power) and is operating under normal conditions.
- Before turning disposer off, let water and disposer run for approximately 15 seconds after shredding or grinding stops. This assures that all waste is thoroughly flushed through trap and drain.
- It is not recommended to use hot water while running disposer. Cold water will keep waste and fats solid so disposer can flush away particles.

TIPS FOR SUCCESSFUL OPERATION

- Be sure disposer is empty before using your dishwasher so it may drain properly.
- You may want to leave the stopper in the drain when not in use to prevent utensils and foreign objects from falling into the disposer.
- Your disposer is ruggedly built to give you many years of trouble free service. It will handle all normal food waste, but it will NOT grind or dispose of such items as plastic, tin cans, bottle caps, glass, china, leather, cloth, rubber, string, clam and oyster shells, aluminum foil or feathers.

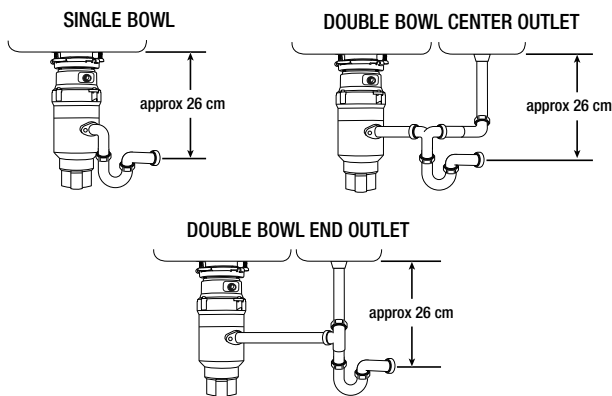
NOTE:

The anti-jam swivel impellers make a clicking sound as they initially swing into place. This indicates normal operation.

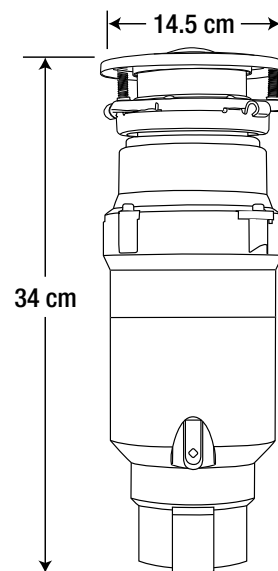
Care and Maintenance

DO NOT ATTEMPT TO LUBRICATE YOUR DISPOSER!

The motor is permanently lubricated. The disposer is self cleaning and scours its internal parts with each use. NEVER put lye or chemical drain cleaners into the disposer, as they cause serious corrosion of metal parts. If used, resulting damage can be easily detected and all warranties are void. Mineral deposits from your water can form on the stainless steel turntable, giving the appearance of rust. DO NOT BE ALARMED, the stainless steel turntables used will not corrode.



GENERAL INSTALLATION DIMENSIONS



Troubleshooting

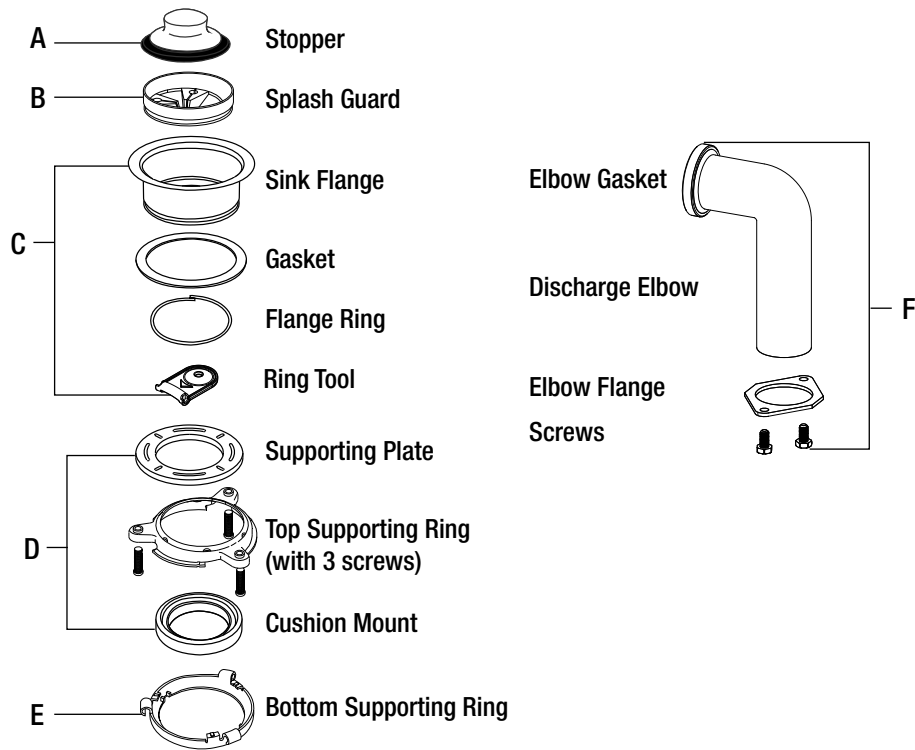
Before seeking repair or replacement, we recommend that you review the following:

Problem	Solution
The disposer is making loud noises.	<ul style="list-style-type: none">- Other than the noises during grinding of small bones and fruit pits, these are usually caused by accidental entry of a spoon, bottle cap or other foreign objects. To correct this, unplug the power cord, turn off the electricity and water. After the disposer has stopped, remove the splash guard, remove the object with long handled tongs, and replace the splash guard.
The disposer does not start.	<ul style="list-style-type: none">- Unplug the power cord and turn either the wall switch or breaker box switch to "OFF" position, depending on your model and wiring configuration. Remove the stopper and/or the splash guard. Check to see if turntable will rotate freely using a wooden spoon handle. If turntable rotates freely, replace the splash guard and check the reset button to see if it has been tripped. The reset button is red and is located on the front end of the disposer. Push the button in until it clicks and remains depressed.- If the reset button has not been tripped, check for a shorted or broken wire connecting to the disposer. Check the electrical power switch, fuse box or circuit breaker. If the wiring and electrical components are intact, the unit may have internal problems that require servicing or a replacement.
The turntable does not rotate freely.	<ul style="list-style-type: none">- Unplug the power cord and turn either the wall switch or breaker box switch to "OFF" position, depending on your model and wiring configuration. Then check for any foreign objects lodged between the turntable and the grind ring. Dislodge the object by rotating the table with a wooden spoon handle and remove the object. If no foreign object is present, there may be internal problems.
The disposer leaks.	<ul style="list-style-type: none">- If the unit leaks at the top, it may be due to:<ol style="list-style-type: none">1) Improper seating of the sink flange (gasket centering, putty or tightening);2) The support ring is not tightened properly;3) Defective or improper installation for the cushion mount.- If the unit leaks at the waste elbow, the leak may be due to improper tightening of the elbow flange screws.

Service Parts

ENGLISH

If you are missing parts or if you require replacement parts, please contact our customer service team at 0800 744 794 (Service available Monday - Friday from 8:00 am - 4:30 pm AEDT). Identify the required part(s) and have the part number(s) ready.



Part	Description	Code	Quantity
A	Stopper	QHG108	1
B	Removable splash guard	QHG114	1
C	Includes: Sink flange Rubber sink flange gasket Flange ring Ring tool	QHG115	1 1 1 1
D	Includes: Supporting plate Top supporting ring (with 3 screws) Cushion mount	QHG117	1 1 1 1
E	Bottom supporting ring	QHG112	1
F	Includes: Elbow gasket Discharge elbow Flange elbow Screw	QHG106	1 1 1 2

ACM Pty Limited
47 Stonedon Drive, East Tamaki,
Auckland 2013 New Zealand
www.acmptyltd.com

Customer Service Hotline
Telephone : 0800 744 794 - 8.00am – 4.30pm

Made in China