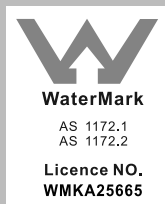


PRESENZA

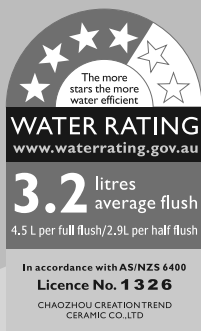
ITALIA

DUAL FLUSH CERAMIC TOILET (FITS BOTH P & S TRAPS)



USER MANUAL

ITM. / ART. 88914
QTA027 / CT2246



Rev. 20200515

To be installed by a licensed plumber

Table of Contents

Important Information	2	Installation	7
Warranty		Seat Installation	11
One Year Limited Warranty	4	Troubleshooting	11
Warranty Claim Procedure	4	Care and Cleaning	11
Pre-Installation		Service Parts	12
Tools/Materials Required	5		
Package Contents	5		
Specification	6		

Important Information

BEFORE BEGINNING INSTALLATION, READ ALL INSTRUCTIONS FIRST. SAVE THESE INSTRUCTIONS FOR FUTURE USE.



WARNING: Ensure that these installation instructions are left with the end user for future reference. It is recommended that the toilet seat and cover be installed after all trade-work is finished.

NOTE: Check all measurements against the actual toilet before commencing as variances do occur.

If there are any problems with installation or operation, do not return to store. Please first call customer service at +61 1800 CONGLOM (Monday to Friday, 6:30 am to 3 pm AEDT).

- Observe all local plumbing and building codes.
- Carefully inspect the new toilet and components for damage.
- If the existing toilet installation area does not have a supply shut-off valve below the tank, you will need to install one before installing the new toilet.
- Ceramic toilets are very fragile, so please handle your new toilet with extra care during installation. Once the toilet is removed from the packaging, always ensure that it is placed on a soft surface such as a towel or blanket before installation.

Important Information (continued)

BRAND		Presenza
MODEL NO.		QTA027
FEATURES	INTENDED USE	Residential
	MATERIAL	White Vitreous China
	WEIGHT	Pan: 31 kg Cistern: 17 kg
	INSTALLATION	Toilet pan screwed and siliconed to floor / Cistern bolted directly to pan
	STANDARDS	AS 1172.1 & AS 1172.2
	TRAP CONFIGURATIONS	P Trap (converts to S trap using approved adapter)
	SET OUT	S trap 45 mm to 150 mm depending on adapter configuration P trap 180 mm (height from floor to center of pan outlet)
	SEAT	Urea formaldehyde seat, soft close, detachable with chrome hinges
	WATER INLET	Back left inlet / bottom left or bottom right via removable cap on the pan / WDI inlet
	WATER RATING	Complies with Australian standards at 4.5L full flush and 2.9L half flush

Warranty

ONE YEAR LIMITED WARRANTY

A thorough inspection must be made before installation and any damage must be promptly reported. We will not be liable for failures or damage that could have been discovered or avoided by proper inspection and testing prior to installation.

Conglom Inc. warrants this product to be free from defects in materials or workmanship for one (1) year from the date of purchase. Proof of purchase (original sales receipt) from the original consumer purchaser must be made available to Conglom Inc. for all warranty claims.

This warranty is non-transferable and shall be voided if the unit is removed from its initial installation or if it is not installed following the manufacturer's instructions. It does not apply in the event of product damage due to the use of other than genuine Conglom Inc. replacement parts. (Replacement parts may be obtained by e-mail at cs@conglomkb.com or by calling +61 1800 CONGLOM between 6:30 am - 3:00 pm AEDT) installation error, abuse, misuse or improper care and maintenance (whether performed by a plumber, contractor, service provider or member of the purchaser's household). The warranty excludes damage due to aggressive air or water conditions, harsh or abrasive cleaners and/or materials.

Under no circumstance shall we be held liable for personal injury or property damage resulting from improper installation or use of this product. We will not be held liable for inconvenience caused by loss of use of this product, costs incurred for labour or materials, removal and installation of replacement units, or any other incidental or consequential damages. Costs relating to obtaining access for repair or replacement are the responsibility of the user.

Our obligation shall be limited to the repair or replacement of a unit (at our discretion) that may prove, by our sole examination, to be defective under normal use and service during the warranty period.

Any failure of this product that is not traceable to a defect in material or workmanship is not covered by this warranty. These non-warrantable items include, but are not limited to:

- Improper installation not in accordance with manufacturer's instructions.
- Dents and/or scratches incurred during shipping, handling, or installation.
- Change in colour or finish due to chemical usage.
- Damage caused by failure to follow care and cleaning guidelines, including damage caused by the use of abrasive cleaners.
- Alterations made to the unit by the purchaser or installer.
- Damage caused by accidental impact, fire, flood, freezing, and normal wear.
- Bends and warping caused by forced connections, over-tightened fittings, and inadequate support during installation.
- Use of any toilet cleaner that are applied in the toilet tank will void the warranty. In-tank cleaners can damage the rubber, metal and/or plastic components, causing leaks and reducing performance.

WARRANTY CLAIM PROCEDURE

If a claimable defect occurs or replacement parts are needed, please contact our customer service team at cs@conglomkb.com or +61 1800 CONGLOM (Service available Monday - Friday from 6:30 am - 3 pm AEDT).

Before you make your call, please ensure that you have:

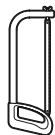
- Model number or description.
- Proof of purchase.
- Details regarding the defect and/or part number.
- Name(s) and address(es) of the owner and/or installer.

Pre-Installation

TOOLS/MATERIALS REQUIRED (NOT SUPPLIED)



Adjustable
wrench



Hacksaw



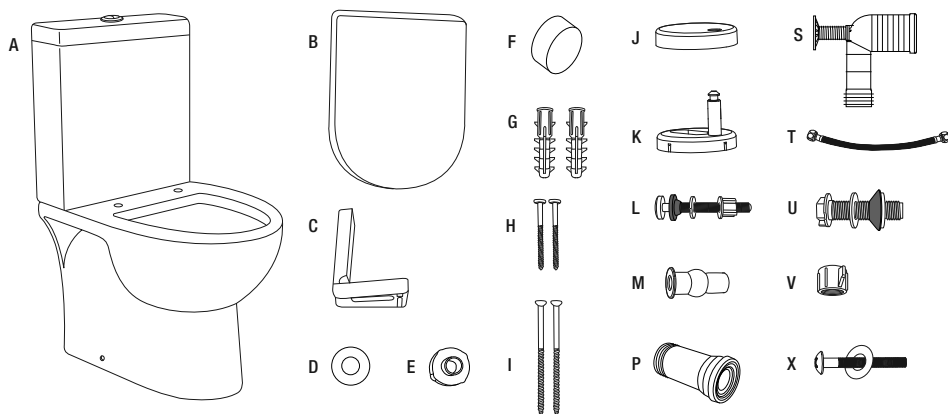
Carpenter's level



Safety
goggles

PACKAGE CONTENTS

Carefully check this product for damage and/or missing parts prior to installation. If there is any damage or if you are missing parts, do not proceed with the installation. Report damage and/or missing parts immediately to our customer service team at cs@conglomkb.com or +61 1800 CONGLOM (Service available in English and French, Monday - Friday from 8:30 am - 5:00 pm EST). Please do not dispose of packaging before you are satisfied with your new toilet.



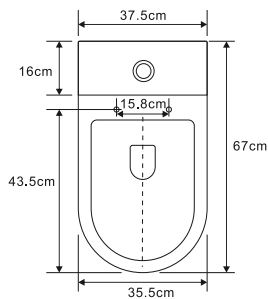
Part	Description	Quantity
A	Fashion Skirted Toilet	1
B	Seat	1
C	Mounting Brackets	2
D	Metal Washers	2
E	Washers	2
F	Caps	2
G	Anchors	2
H	Mounting Bracket Screws	2
I	Toilet Bowl Mounting Screws	2
J	Covers (Supplied with Seat)	2

Part	Description	Quantity
K	Hinge Plates (Supplied with Seat)	2
L	Plastic Cistern Bolt Set	2
M	Expansion Nuts	2
P	P Trap Connector	1
S	S Trap Adapter	1
T	Waterline	1
U	Water Supply Connector	2
V	Water Plug	2
X	Seat Bolts (Supplied with Seat)	2

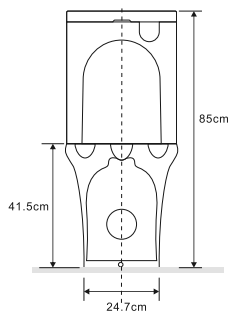
Pre-Installation (continued)

SPECIFICATIONS

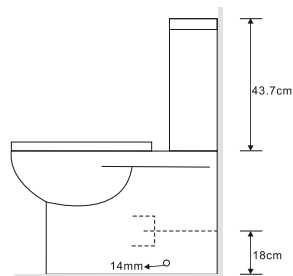
NOTE: Ensure that the inlet water pressure does not exceed 500kPa as per AS/NZ35003.3.2.



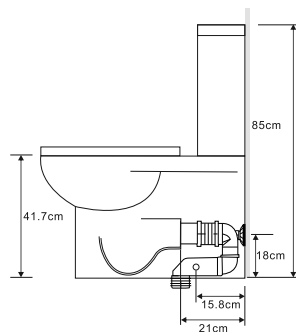
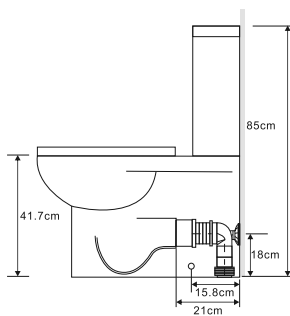
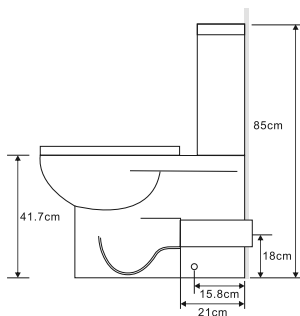
P TRAP INSTALLATION



**S TRAP INSTALLATION
45-150 MM SET OUT**



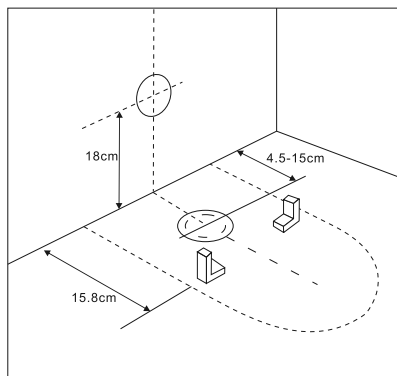
**S TRAP INSTALLATION
150-190 MM SET OUT
(S TRAP NOT SUPPLIED)**



Installation

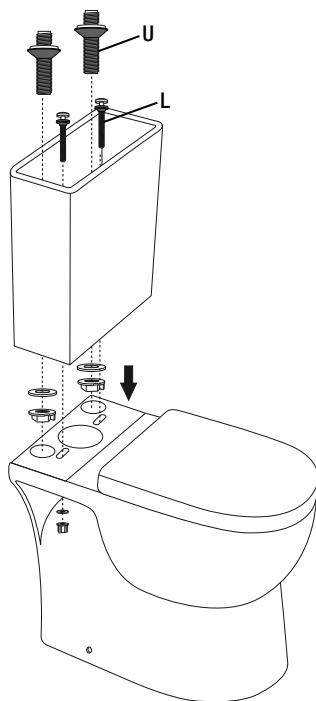
NOTE: Do not install this toilet using an offset pan connector when using the uniconnector to install the pan as this may cause flushing problems.

- Use the pan to rough-in the position for the waste outlet and floor mounting bracket holes. Ensure that the water inlet connection is not obstructed by the toilet.
- See “Securing the Toilet To The Floor” section on how to secure the mounting brackets to the floor.



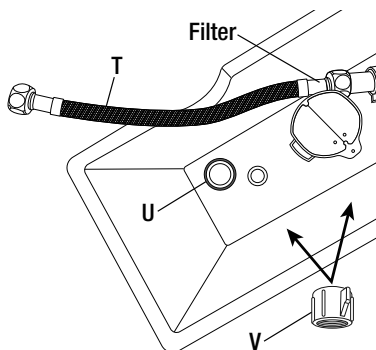
To assemble the cistern to the pan:

- Install water supply connector (U) fittings into the large, rear holes of the cistern with the black rubber washers inside the cistern.
- Insert the plastic cistern bolts (L) into the bottom of the cistern ensuring the black washers are inside the cistern.
- Lift the cistern over the pan ensuring the plastic cistern bolts line up with the holes in the pan and that the center foam coupling seal is seated correctly in the pan recess (do not use sealant).
- Secure the cistern evenly to the pan using the plastic cistern nuts and washers. Do not overtighten.



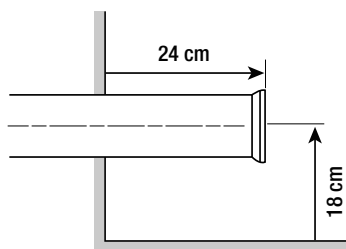
Installation (continued)

- Connect the flexible waterline (T) to the fill valve inside the cistern making sure the fill valve filter is pre-installed correctly inside the fill valve.
- For top supply valve connections, route the flexible waterline through the top access port of the cistern.
- For bottom supply valve connections, connect the flexible waterline (T) to the appropriate waterline connector (U) in the bottom of the cistern.
- Plug any open water supply connector (U) with a water plug (V) from inside the cistern.

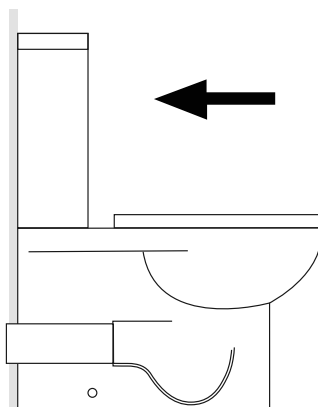


P TRAP INSTALLATION

- Set up the waste pipe so that the end of the pan collar extends 24 cm from finished wall.
- If the waste pipe is not long enough, use the supplied P Trap Adapter (P) to extend the waste pipe.



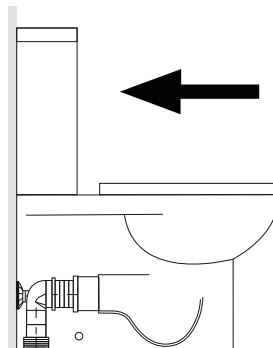
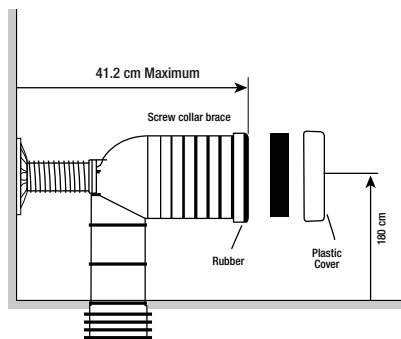
- Make sure that the inlet hose is pushed through hole in the side of the pan. Align and push the fully assembled pan and cistern back to the wall, connecting the pan spigot to the pan collar. Bucket flush and check for leaks.



Installation (continued)

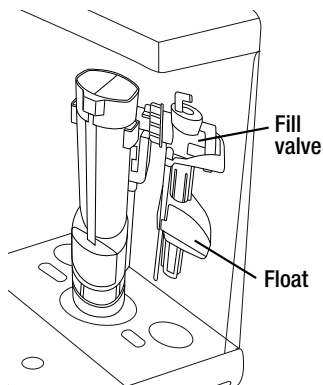
S TRAP INSTALLATION

- Lubricate the rubber fins of the pan bend and position this in the waste pipe at the correct height. Fix the pan connector back to the wall using the screw fitting and collar. (The screw fittings need to be cut down to size so that the pan connector is fixed in the vertical position.)
- Remove the plastic cover and rubber from the front of the pan connector. Cut the front of the pan connector down to the required length. Take care to ensure the cut is even and straight. Lubricate the rubber then replace it along with the plastic cap onto the pan connector.
- Make sure the inlet hose is pulled through the hole inside of the pan. Align and push the fully assembled pan and cistern back to the wall, connecting the pan spigot into the pan connector. Bucket flush and check for leaks.



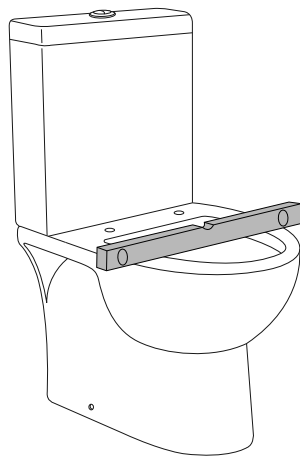
INSTALLATION FOR ALL TRAP TYPES

- Connect the cistern to the water supply valve using the appropriate fittings.
- Ensure the plastic float of the fill valve slides freely and is not obstructed. Fill the cistern to the appropriate height.
- Fill and flush the toilet several times and carefully check all supply and waste connections for leaks. Make necessary adjustments as needed.



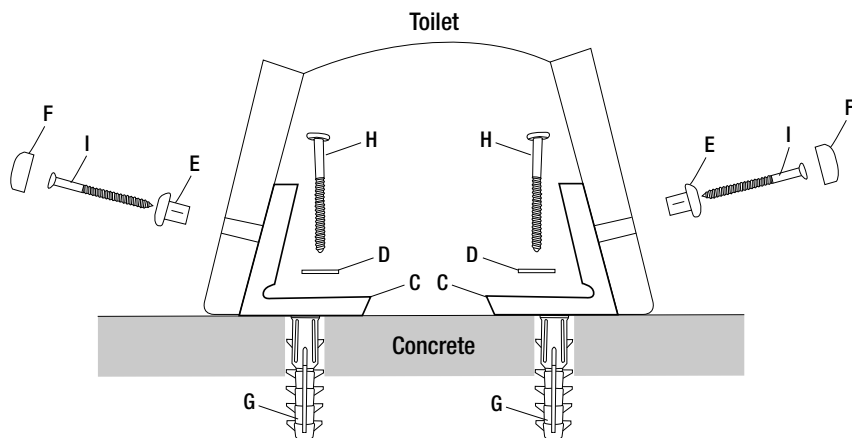
Installation (continued)

- Ensure that the pan is level and that the cistern aligns with the wall. Make minor adjustments if necessary. (Note: walls might not be square with floors which may create a gap behind the cistern. This can be covered up by using a suitable flexible gap filler.)



SECURING THE TOILET TO THE FLOOR

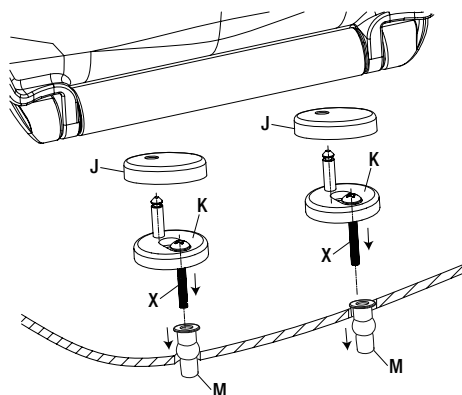
- The toilet should be secured to a flat and stable floor substrate.
- Drill holes in the floor and insert anchors (G) (see below). Secure the mounting bracket (C) to the floor with washer (D) and mounting bracket screw (H).
- Secure the toilet to the mounting bracket (C) using washer (E) and mounting screw (I) and cover the fasteners with cap (F).
- Once finished securing the toilet to the floor, double check to make sure it is stable and level.



Installation (continued)

SEAT INSTALLATION

- Insert the expansion nuts (M) into the mounting holes in the toilet.
- Insert the bolts (X) through the hinge plates (K), and secure them to the nuts (M).
- Adjust the hinges to fit the seat.
- Tighten the hinge plates (K) if necessary and install the decorative cover (J).
- Install the seat making sure it clicks securely into position.



Trouble shooting

Flush volume

If the push rods are too short and not fully connecting with the flush valves, this may result in low flush volume. Readjust push rod height and ensure the bottom of the push rod is flush with the top surface of the valve cylinder.

Flush valve leaking

If the push rods are too long, this may result in the flush valve leaking. Shorten push rods with the adjustments nuts.

Tank leaking from the valve

To clean the valve seal or replace the entire unit:

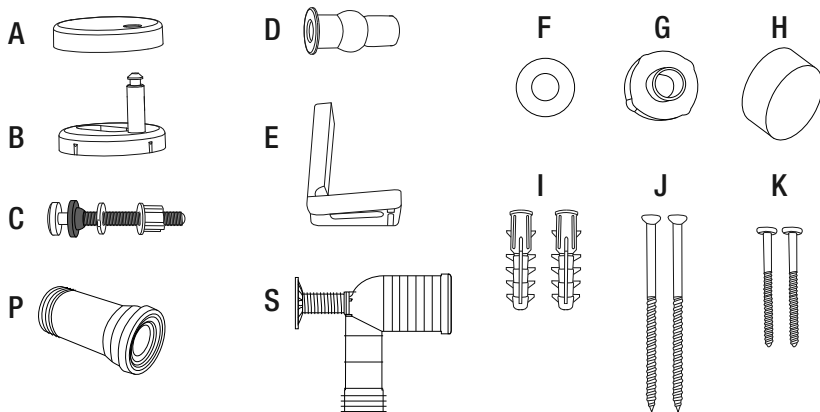
- Turn cylinder counter clockwise and lift off.
- Clean the bottom of the flush valve seal and the top of the flush valve seat.
- Reverse this procedure to attach flush valve cylinder.

Care and Cleaning

For general cleaning, use a mild, nonabrasive soap and warm water. Do not use abrasive cleaners (such as cleaners that contain sand or silica that will scratch the glaze surfaces). Common bowl cleaners may be used on the glazed surface of the bowl. Do not use "in-tank" bowl cleaners because they contain aggressive chemicals that attack the tank components (see warranty exclusions).

Service Parts

If you are missing parts or require replacement parts, please contact our customer service team at cs@conglomkb.com or +61 1800 CONGLOM (Service available in English and French, Monday - Friday from 8:30am - 5pm EST). Identify the required part(s) and have the part number(s) ready.



Part	Description	Code	Quantity
A	Covers	QHT145	2
B	Hinge Plates	QHT146	2
C	Plastic Cistern Bolt Set	QHT147	2
D	Expansion Nuts	QHT148	2
E	Mounting Brackets	QHT149	2
F	Metal Washers	QHT150	2
G	Washers	QHT151	2
H	Caps	QHT152	2
I	Anchors	QHT153	2
J	Mounting Bracket Screws	QHT154	2
K	Toilet Bowl Mounting Screws	QHT155	2
P	P Trap Connector	QHT159	1
S	S Trap Adapter	QHT156	1

** Our goods come with guarantees that cannot be excluded under the Australian Consumer Law. You are entitled to a replacement or refund for a major failure and for compensation for any other reasonably foreseeable loss or damage. You are also entitled to have the goods repaired or replaced if the goods fail to be of acceptable quality and the failure does not amount to a major failure.

Imported by :

Conglom

Conglom International
275 Kurrajong Rd
Prestons
NSW 2170
Australia

+61 1800 CONGLOM | cs@conglomkb.com
(service available Monday - Friday from 6:30 am - 3 pm AEDT)

www.conglomkb.com

