

FROM ORDINARY TO OUTSTANDING

**transform**

# Utility Sink

with faucet and storage cabinet

Model No. QL044




**Owner's Manual**

# Table of Contents

<b>Table of Contents</b> .....	2	<b>Faucet and Sprayer Installation</b> .....	7
<b>Safety Information</b> .....	2	<b>Strainer Installation</b> .....	7
<b>Warranty</b> .....	3	<b>Mounting the Utility Sink</b> .....	8
<b>One Year Limited Warranty</b> .....	3	<b>Placement</b> .....	8
<b>Warranty Claim Procedure</b> .....	3	<b>Supply Line Assembly</b> .....	8
<b>Pre-Installation</b> .....	4	<b>Maintenance</b> .....	8
<b>Tools/Materials Required</b> .....	4	<b>Cartridge Replacement</b> .....	8
<b>Package Contents</b> .....	5	<b>Care and Cleaning</b> .....	9
<b>Installation</b> .....	6	<b>Utility Sink</b> .....	9
<b>Base Installation</b> .....	6	<b>Cabinet</b> .....	9
<b>Door Handle Installation</b> .....	6	<b>Service Parts</b> .....	10

# Safety Information

## READ AND SAVE THESE INSTRUCTIONS

 **DANGER:** Always wear safety goggles and gloves in order to avoid personal injury.

1. Inspect your unit before proceeding. Once you unpack your unit, check for chips, scratches, cracks, dents or scuff marks. If any damage is noticed, do not install.
2. Use this unit only in the manner intended by the manufacturer. If you have any questions, contact the manufacturer.
3. Installation work and plumbing must be done by qualified person(s) in accordance with all applicable codes and standards.
4. Protect the entire surface during installation.
5. All holes drilled into the unit must be done from the finished surface side with extreme care and caulked very carefully to form a watertight barrier.

# Warranty

## ONE YEAR LIMITED WARRANTY

A thorough inspection must be made before installation and any damage must be promptly reported. We will not be liable for failures or damage that could have been discovered or avoided by proper inspection and testing prior to installation.

Conglom Kitchen & Bath warrants this product to be free from defects in materials or workmanship for one (1) year from the date of purchase. Proof of purchase (original sales receipt) from the original consumer purchaser must be made available to Conglom Kitchen & Bath for all warranty claims.

This warranty is non-transferable and shall be voided if the unit is removed from its initial installation or if it is not installed following the manufacturer's instructions. It does not apply in the event of product damage due to the use of other than genuine Conglom Kitchen & Bath replacement parts, (Replacement parts may be obtained by e-mail at [customer.service@conglomkb.com](mailto:customer.service@conglomkb.com) or by calling 1-877-333-0098 between 8:30 am - 5:00 pm EST) installation error, abuse, misuse or improper care and maintenance (whether performed by a plumber, contractor, service provider or member of the purchaser's household). The warranty excludes damage due to aggressive air or water conditions, harsh or abrasive cleaners and/or materials.

Under no circumstance shall we be held liable for personal injury or property damage resulting from improper installation or use of this product. We will not be held liable for inconvenience caused by loss of use of this product, costs incurred for labour or materials, removal and installation of replacement units, or any other incidental or consequential damages. Costs relating to obtaining access for repair or replacement are the responsibility of the user.

Our obligation shall be limited to the repair or replacement of a unit (at our discretion) that may prove, by our sole examination, to be defective under normal use and service during the warranty period.

Any failure of this product that is not traceable to a defect in material or workmanship is not covered by this warranty. These non-warrantable items include, but are not limited to:

- Improper installation not in accordance with manufacturer's instructions.
- Dents and/or scratches incurred during shipping, handling, or installation.
- Change in colour or finish due to chemical usage.
- Damage caused by failure to follow care and cleaning guidelines, including damage caused by the use of abrasive cleaners.
- Alterations made to the unit by the purchaser or installer.
- Damage caused by accidental impact, fire, flood, freezing, and normal wear.
- Bends and warping caused by forced connections, over-tightened fittings, and inadequate support during installation.
- This warranty does not extend to commercial and institutional installation or use.

## WARRANTY CLAIM PROCEDURE

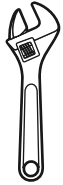
If a claimable defect occurs or replacement parts are needed, please contact our customer service team at [customer.service@conglomkb.com](mailto:customer.service@conglomkb.com) or 1-877-333-0098 (8:30 am - 5 pm, EST, Monday - Friday).

Before you make your call, please ensure that you have:

- Model number or description.
- Proof of sale.
- Details regarding the defect and/or part number.
- Name(s) and address(es) of the owner and/or installer.

# Pre-Installation

## TOOLS/MATERIALS REQUIRED (NOT SUPPLIED)



Adjustable wrench



Needle nose pliers



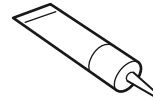
Phillips screwdriver



Utility knife



Pipe wrench



Sealant



Carpenter's level



Hacksaw



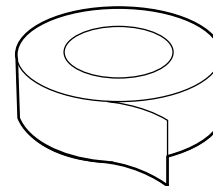
Safety gloves



Safety goggles



Allen Key



Masking Tape

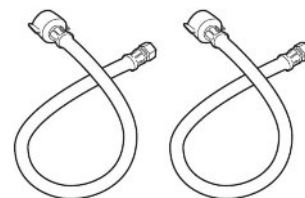
## PARTS REQUIRED (NOT SUPPLIED)



P-Trap



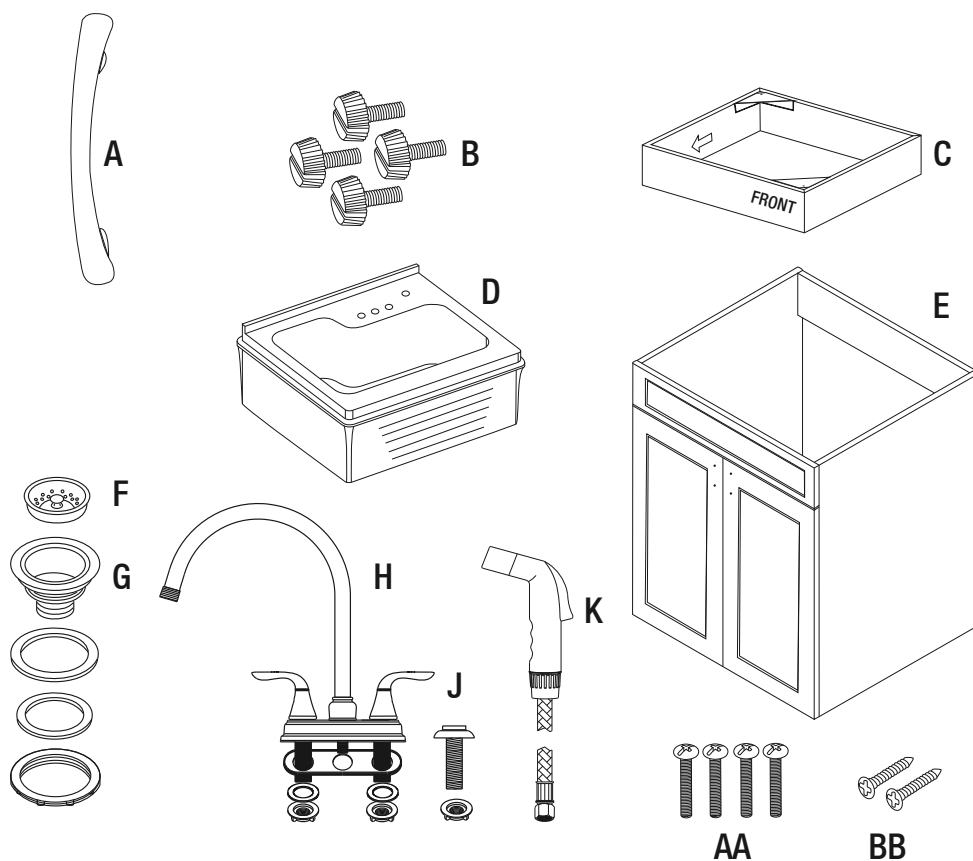
Tail Pipe



Supply Line

# Pre-Installation (continued)

## PACKAGE CONTENTS



Part	Description	Quantity
A	Door Handles	2
B	Cabinet Feet	4
C	Cabinet Base	1
D	Utility Sink	1
E	Cabinet	1
F	Strainer Basket	1
G	Strainer Assembly	1
H	Faucet Assembly	1
J	Sprayer Support	1
K	Sprayer with Hose	1
AA	Door Handle Screws	4
BB	Base Screws	2

# Installation

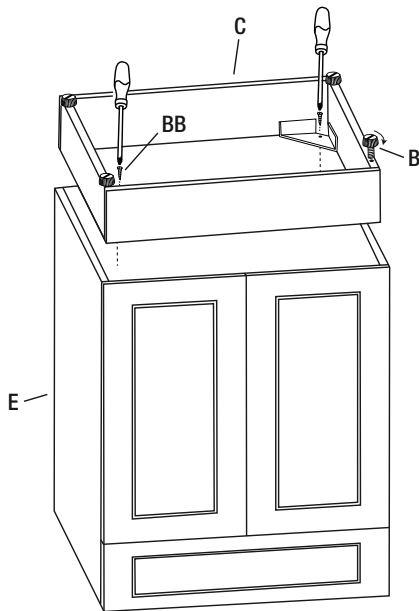
## BASE INSTALLATION

A thorough inspection must be made before installation and any damages or missing parts must be promptly reported. Do not proceed with the installation. Do not dispose of packaging before you are satisfied with your new utility sink.

1. Unpack the unit and place the sink (D) on a blanket or cardboard to protect the surface.
2. Turn the cabinet (E) upside down onto the protective surface.
3. Gently attach the cabinet base (C) onto its proper location. Using the supplied base screws (BB), attach the base to the cabinet.
4. Attach cabinet feet (B) to the base.
5. Gently place the cabinet upright.



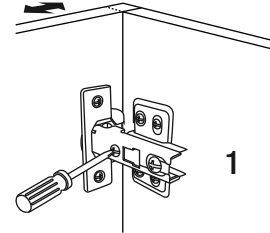
**CAUTION:** Do not place side load onto feet when righting the cabinet.



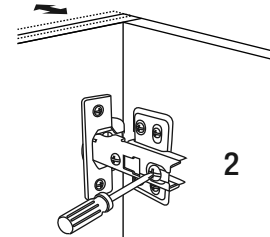
## DOOR POSITION ADJUSTMENT

If the doors need to be repositioned, the hinges can be adjusted to ensure a precise fit with the cabinet.

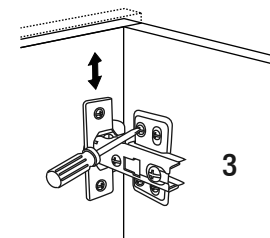
1. The lateral adjustment screw adjusts the door left or right.



2. The horizontal adjustment screw adjusts the door forward or backward.



3. The vertical adjustment screw adjusts the door up or down.



## DOOR HANDLE INSTALLATION

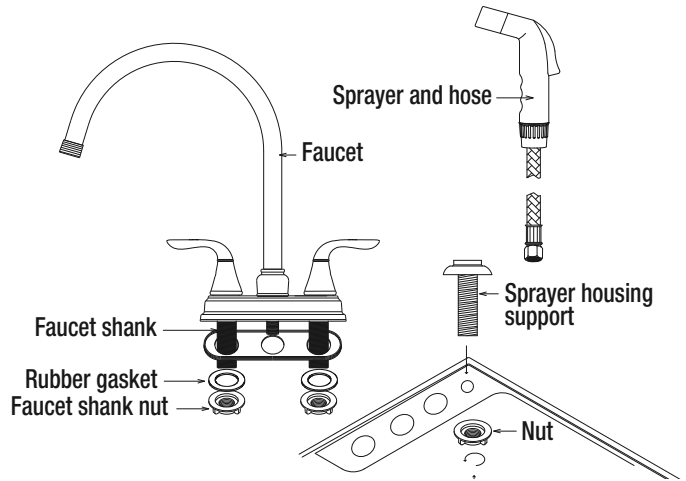
1. Insert the door handle screws (AA) into the pre-drilled holes on each door.
2. Attach the door handles (A) and hand tighten the door handle screws (AA).
3. Repeat on other door.

# Installation (continued)

## FAUCET AND SPRAYER INSTALLATION

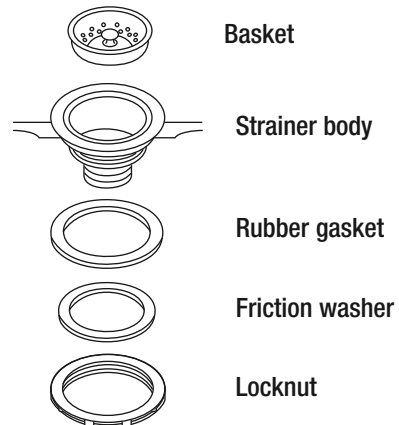
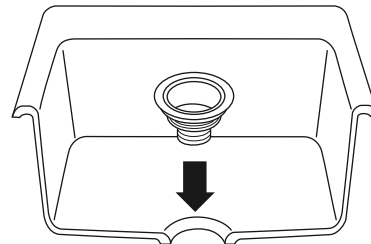
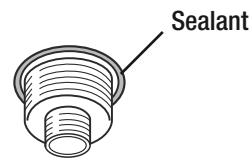
Before installing, carefully unpack the faucet and ensure no parts are missing.

1. Insert the spray housing support through the pre-drilled hole on the sink corner. Screw the nut onto the threads and hand tighten.
2. Run the spray hose down through the spray housing and up through the centre faucet mounting hole. Connect the spray hose to the faucet and tighten with a wrench.
3. Install the new faucet on sink with hot "H" to the left and cold "C" to the right. From under the sink, thread mounting nuts and rubber gaskets onto the faucet shanks and tighten the mounting nuts.



## STRAINER INSTALLATION

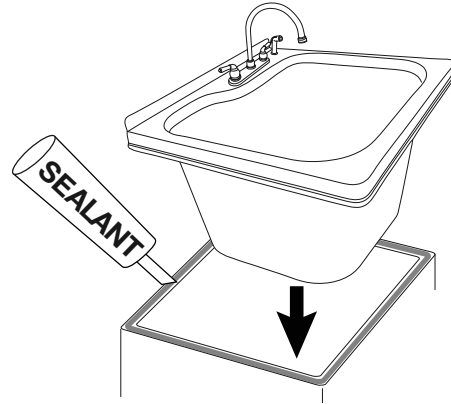
1. Apply a ring of sealant to the underside of the strainer flange.
2. Insert the strainer body into the sink.
3. Assemble the rubber gasket, friction washer and locknut onto the strainer body from under the sink.
4. Hand tighten the locknut. Do not over tighten locknut as it may split or deform the body of the strainer.



## Installation (continued)

### MOUNTING THE UTILITY SINK

1. Carefully place a bead of sealant all around the top of the cabinet.
2. Ease the sink onto the cabinet, and ensure it is placed evenly and centered on the cabinet. Wipe off any excess sealant. Use masking tape to hold the unit in place until the sealant dries.



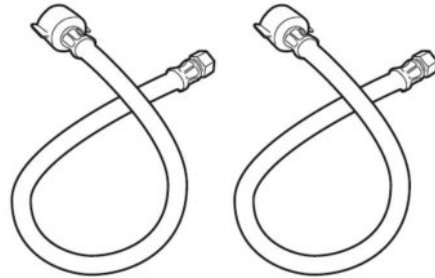
### PLACEMENT

Move the assembled unit to its final location. Final hook up of the supply lines and drain system can now be completed.

### SUPPLY LINES (NOT INCLUDED)

The supply lines that attach the faucet to the household water system, are not supplied with this unit. They need to be purchased separately.

Follow the manufacturers instructions for proper installation of the supply lines.

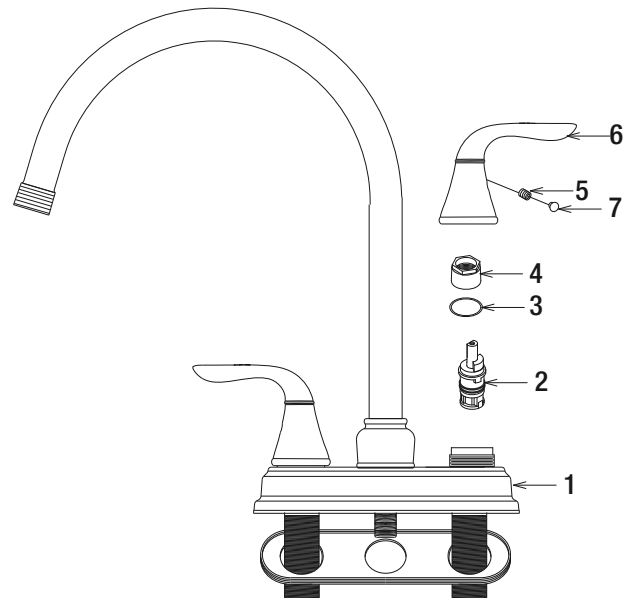


## Maintenance

### CARTRIDGE REPLACEMENT

To replace the cartridge, please follow these steps:

1. Turn off the water supply to the faucet.
2. Remove water indicator (7) and screw (5) with an Allen key.
3. Remove the handle (6).
4. Screw off the cartridge cover (4).
5. Remove the gasket (3).
6. Pull out the cartridge (2) by hand.
7. Click in the new cartridge.
8. Place the gasket (3) back in its original position.
9. Screw on the cartridge cover (4). Do not over tighten.
10. Place the handle (6) over top and secure the screw (5) with an Allen key, replace the water indicator (7).





# Care and Cleaning

## UTILITY SINK

This utility sink is manufactured with premium acrylic. With the proper care and maintenance it will provide you with many years of enjoyment.

Do
<ul style="list-style-type: none"><li>- Use common household cleaners (non-abrasive) or a mild liquid dish washing detergent. Rinse well and dry with a clean cloth.</li><li>- Remove dust and dry dirt with a soft, damp cloth.</li><li>- Clean grease, oil, paint and ink stains with isopropyl (rubbing alcohol). Immediately rinse with water after removal of stain.</li></ul>

Do not
<ul style="list-style-type: none"><li>- Do not allow your acrylic surface to come into contact with products such as acetone (nail polish remover), nail polish, dry cleaning solution, lacquer thinners, gasoline, pine oil, etc.</li><li>- Use caution when using sharp instruments that may fall and scratch the surface.</li></ul>

## CABINET

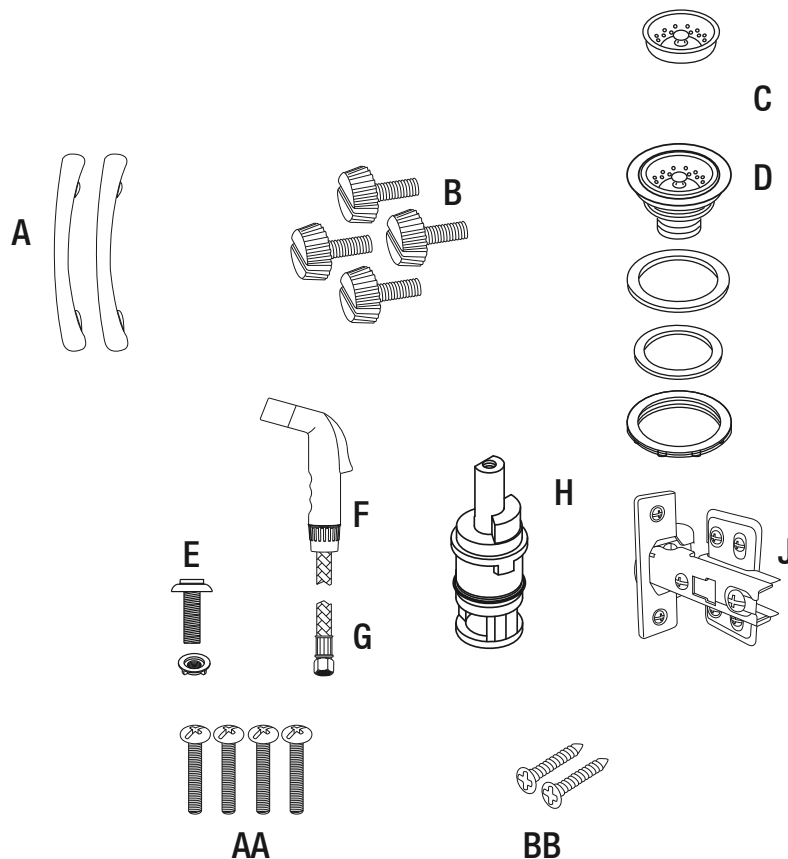
To maintain the surface of your cabinet, follow these tips.

Do
<ul style="list-style-type: none"><li>- Remove dust and dry dirt with a soft, damp cloth.</li><li>- Clean grease, oil, paint and ink stains with isopropyl (rubbing alcohol). Immediately rinse with water after stain removal.</li></ul>

Do not
<ul style="list-style-type: none"><li>- Do not allow your cabinet surface to come into contact with products such as acetone (nail polish remover), nail polish, dry cleaning solution, lacquer thinners, gasoline, pine oil, etc.</li><li>- Use caution when using sharp instruments that may fall and scratch the surface.</li></ul>

# Service Parts

If you are missing parts or if you require replacement parts, please contact our customer service team at [customer.service@conglomkb.com](mailto:customer.service@conglomkb.com) or 1-877-333-0098, 8:30 am – 5 pm, EST, Monday–Friday. Identify the required part(s) and have the part number(s) ready.



Part	Description	Code	Quantity
A	Door Handles	QHL132	2
B	Cabinet Feet	QHL107	4
C	Strainer Basket	QHS101	1
D	Strainer Assembly	QHS150	1
E	Sprayer Support	QHL110	1
F	Sprayer	QHL112	1
G	Flexible Hose	QHL113	1
H	Cartridge	QHS137	1
J	Cabinet Hinges	QHL111	4
AA	Door Handle Screws	QHL104	4
BB	Base Screws	QHL108	2

FROM ORDINARY TO OUTSTANDING

**transform**

Imported by:

**Conglom**  
KITCHEN & BATH

St-Laurent, Quebec, H4S 2C3

1-877-333-0098

[customer.service@conglomkb.com](mailto:customer.service@conglomkb.com)

[www.conglomkb.com](http://www.conglomkb.com)

Made in China